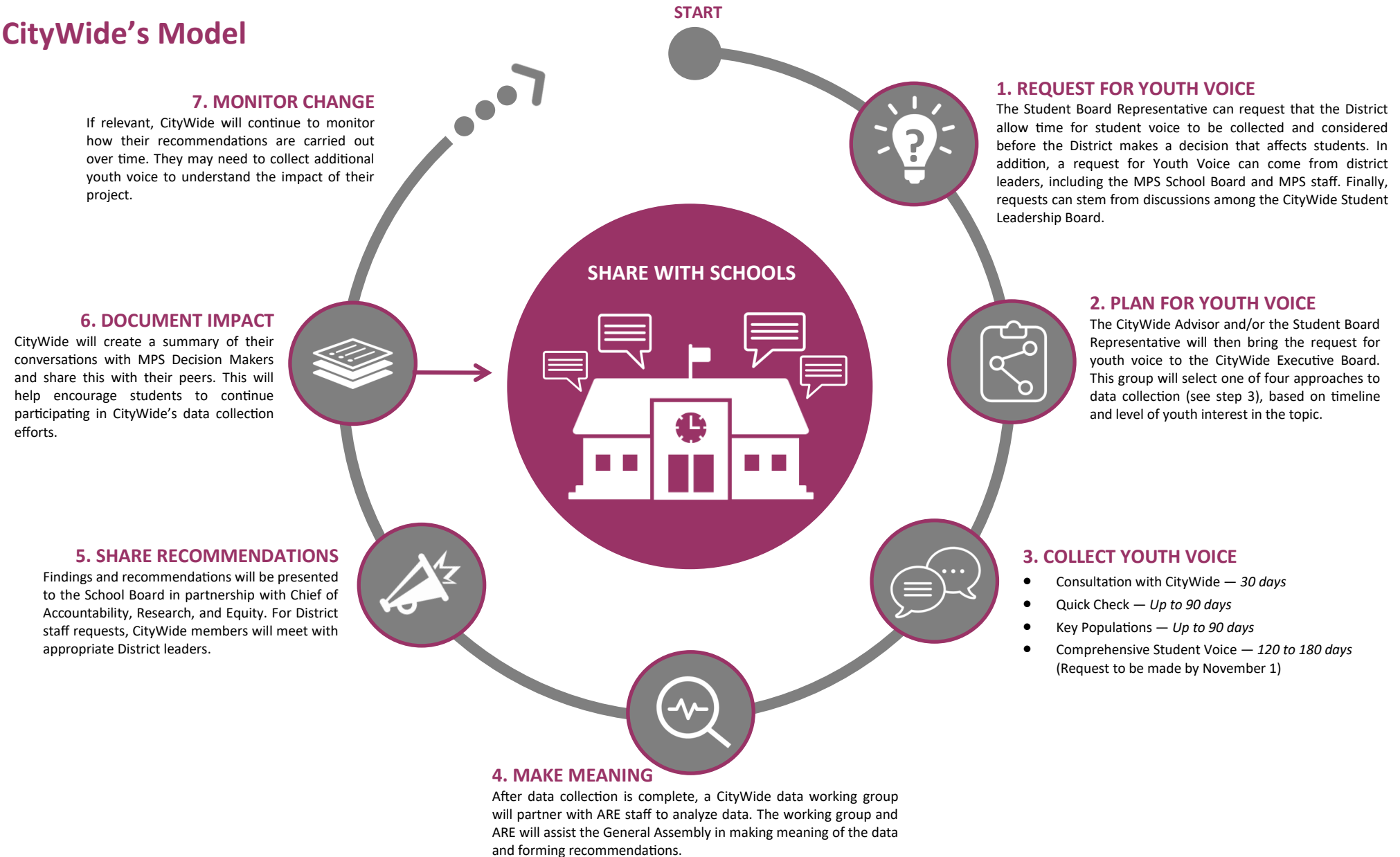


## Purpose

The CityWide Student Leadership Board provides a systematic process for gathering and sharing youth voice with MPS Decision Makers. This process allows time for our group to engage with our peers on issues before decisions are made that will affect them. CityWide is supported by staff from the Accountability, Research, and Equity division.

## CityWide's Model



### Approaches

The CityWide Student Leadership Board has identified four approaches to youth voice that range in scale and scope. During step 2, the CityWide Executive Board will review the request and determine which of the four options outlined below to select. Key considerations include timeline, level of youth interest on the topic, impact on students (especially if the impact is not equitably distributed across the entire student population), and capacity of the CityWide working group.



Approach	Timeline	Methods	Choose if...	Limitations
Consultation with CityWide	30 Days	Focus Group Only includes CityWide reps	<ul style="list-style-type: none"> <li>• Topic is of low interest among student population and/or has minor impact on students</li> <li>• District does not have flexibility on timeline for decision</li> <li>• Decision maker wants deeper discussion with students around more complex issues</li> </ul>	<ul style="list-style-type: none"> <li>• Certain personalities, not holistic</li> <li>• Might not have all high schools physically represented</li> <li>• Maximum of two hours per meeting</li> </ul>
Quick Check	Up to 90 Days	Survey and/or Participatory Method	<ul style="list-style-type: none"> <li>• Topic is easy for students to understand</li> <li>• Topic or decision impacts the general student population</li> <li>• Topic is of high interest to students</li> <li>• Decision maker wants to connect with wide range of students quickly</li> </ul>	<ul style="list-style-type: none"> <li>• Only includes high school student perspectives</li> <li>• Limited ability to provide deep understanding of issue or topic</li> <li>• Requires significant staff support from ARE to administer and analyze</li> </ul>
Key Populations	Up to 90 Days	Focus Groups	<ul style="list-style-type: none"> <li>• Issue is more complex and requires background information in order for students to contribute</li> <li>• Decision impacts specific group(s) more than others</li> <li>• Decision maker needs more information or context from students to inform recommendations</li> </ul>	<ul style="list-style-type: none"> <li>• Requires CityWide members to be trained on topic or issue and facilitation plan</li> <li>• Only includes perspectives of small number of students</li> </ul>
Comprehensive Student Voice	120—180 Days Requests must be made by November 1 to ensure CityWide has time to review data and provide recommendations	Mixed Methods	<ul style="list-style-type: none"> <li>• Issue or topic impacts wide range of students (K-12)</li> <li>• Topic is of high interest to students (K-12)</li> <li>• District does have flexibility on timeline for decision</li> </ul>	<ul style="list-style-type: none"> <li>• Requires significant staff support from ARE to support administration and analyze quantitative data collected</li> </ul>